

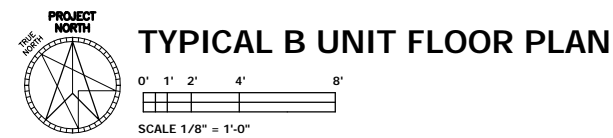
UNIT NUMBERS

- 302
- 402
- 502
- 602
- 702
- 802
- 902
- 1002
- 1102
- 1202
- 1302
- 1402
- 1502
- 1602
- 1702
- 1802
- 1902
- 2002
- 2102
- 2202
- 2302

LIVING AREA = 1180 S.F.
GULFSIDE BALCONY = 171 S.F.

TOTAL = 1351 S.F.

NOTE: SQUARE FOOTAGE IS MEASURED PAINTED SURFACE TO PAINTED SURFACE OF DEMISING WALLS AND TO CENTERLINE OF SLIDING GLASS DOORS.



KEY	
	INDICATES TILED AREA (TILE NOT DRAWN TO SCALE)

Project	HDPR-203
Date	11-13-03
Drawn	G H
Checked	M M
Sheet	

Sequence XX of XX total
A3.02



Majestic Beach Towers
Condominium Tower Stage II
 Panama City Beach, Florida

Preliminary
 Not for
 Construction
 11-13-03